

Architectural Exterior Range

Installation instructions for exterior Wall Bar



Warnings & Cautions

- To avoid electric shock, serious injury or property damage, isolate power before installing, removing or servicing the product.
- It is recommended that luminaires are installed by a qualified electrician to ensure the installation complies with the local current wiring regulations.
- It may be necessary to upgrade your MCBs to allow for increased inrush current.
- This luminaire is suitable for indoor and outdoor use.
- These products are designed for connection to a 200-240V~ 50/60Hz supply.
- For exterior products, do not install in areas that are near to continual running water or prone to flooding.
- Any broken or damaged parts should be replaced as soon as possible. JCC will not accept responsibility for claims arising from sub-standard installations; which will void the warranty.

INSTALLATION

ENGLISH

Specifications Colour temp: 3000K

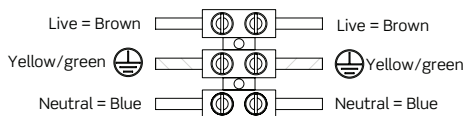
Product code	Wattage	Lumens	LpcW	Ra
JC17002	19.6W	1818	93	82
JC17003	14.4W	1098	76	84
JC17004	14.7W	1377	94	84
JC17005	7.2W	587	82	85
JC17006	4.3W	279	65	85

Available finishes: Anthracite only

Standard version connection

200-240V~ 50/60Hz / Class I ⚡

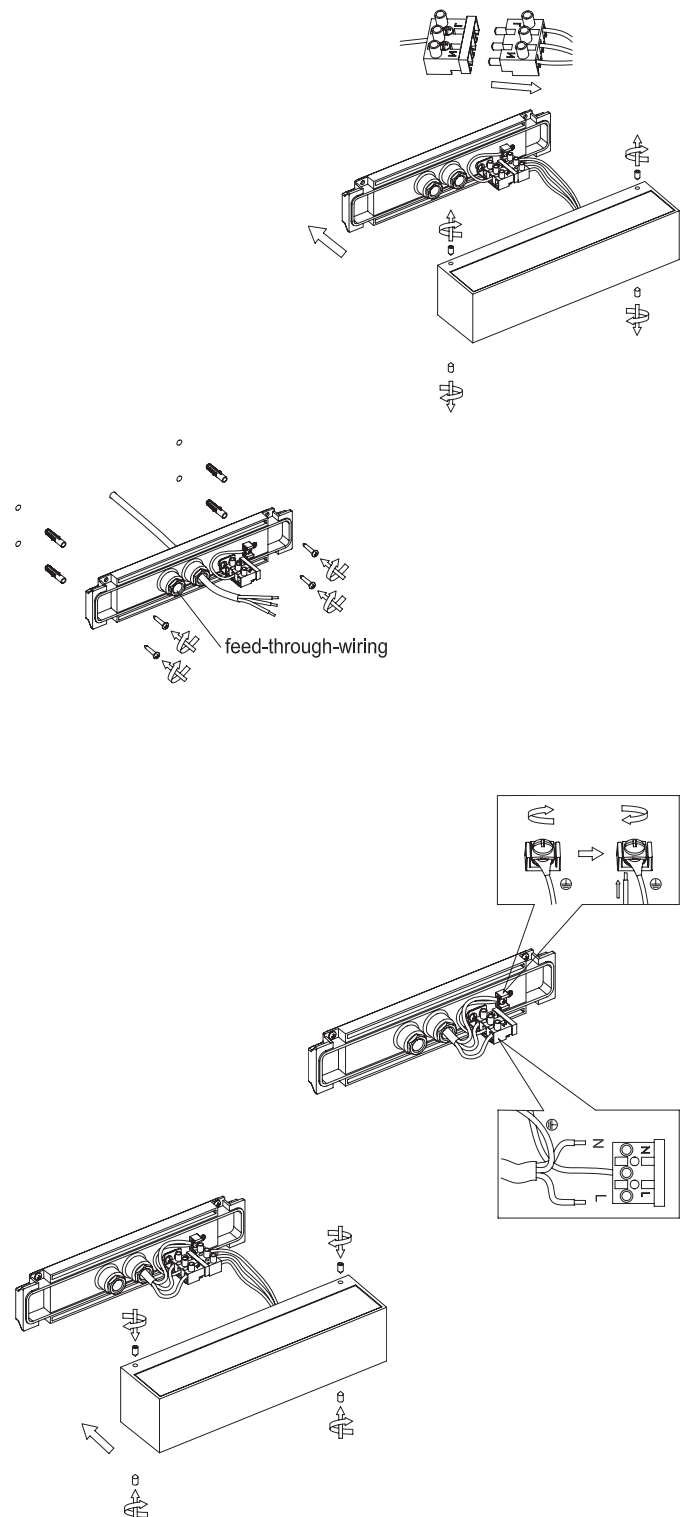
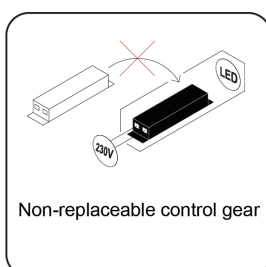
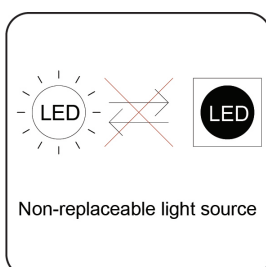
Figure 1. Mains input



- Read instructions and check that you have all of the tools and accessories required to complete the installation correctly. Isolate power supply before starting the installation.

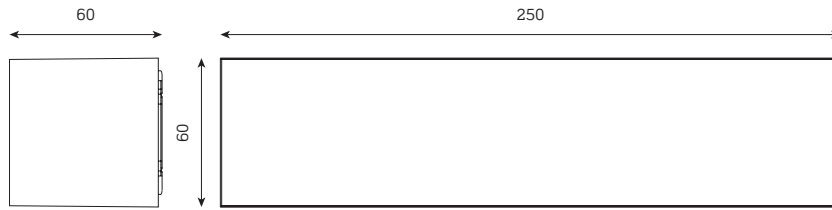
Installation procedure

- Remove back plate from body and use as a template for fixing.
- Feed power supply through compression coupling grommet.
- Fix back plate to desired location ensuring correct orientation.
- Terminate electrical connections as shown in Fig 1.
- Refit body to back plate and secure.
- Turn on supply and test for operation.

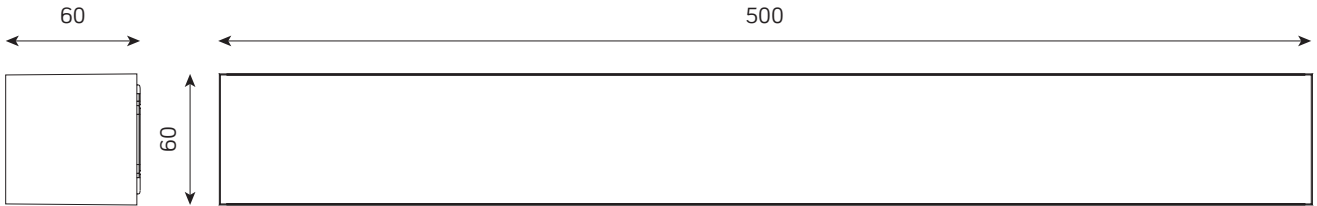


Profile & Dimensions

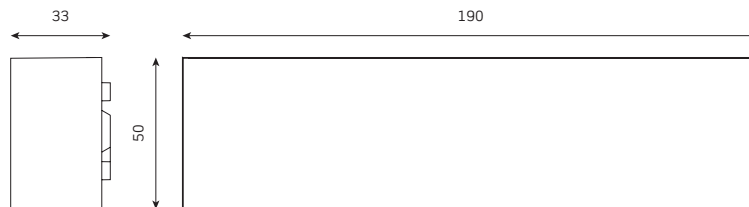
JC17004/JC17005



JC17002/JC17003



JC17006



All dimensions in millimetres

General maintenance requirements for exterior products:

JCC recommends that all exterior products, especially those with stainless steel components are cleaned with warm water and dried with a chamois leather or absorbent dry cloth. Weathering, environmental pollution and bird droppings should be cleaned off with a non-abrasive cleaner suitable for the material type. To preserve the finish of the product, clean every two to three months. After installation is complete, then bi-annually, grease or lubricate removable fixings, to help ensure maintenance is trouble free.

You can help protect the environment. Please remember to respect the local regulations: hand in the non-working electrical equipment to an appropriate waste disposal centre. The packaging material is recyclable. Dispose of the packaging in an environmentally friendly manner and make it available for the recyclable material collection service.

Important warranty information

This product is supported by a 2-year standard warranty which will extend to 3 years if registered within the first year of purchase. Please register at jcc.co.uk/warranty - Terms and conditions apply.

The installer will be asked to provide the following information, which is detailed on a label attached to the luminaire's chassis:
Product Code/Date Code.